

*Reflex Liquid Level*

*Gauge*

## Who We Serve

Our products are recognized for eliminating liquid level gauge and safety sight glass problems for a broad array of customers in industry, government and academia, including:

- Chemical
- Utilities
- Food processing
- Petrochemical
- Pharmaceutical
- Pulp and paper processing
- University research
- Government agencies

## How Else Can We Help You?

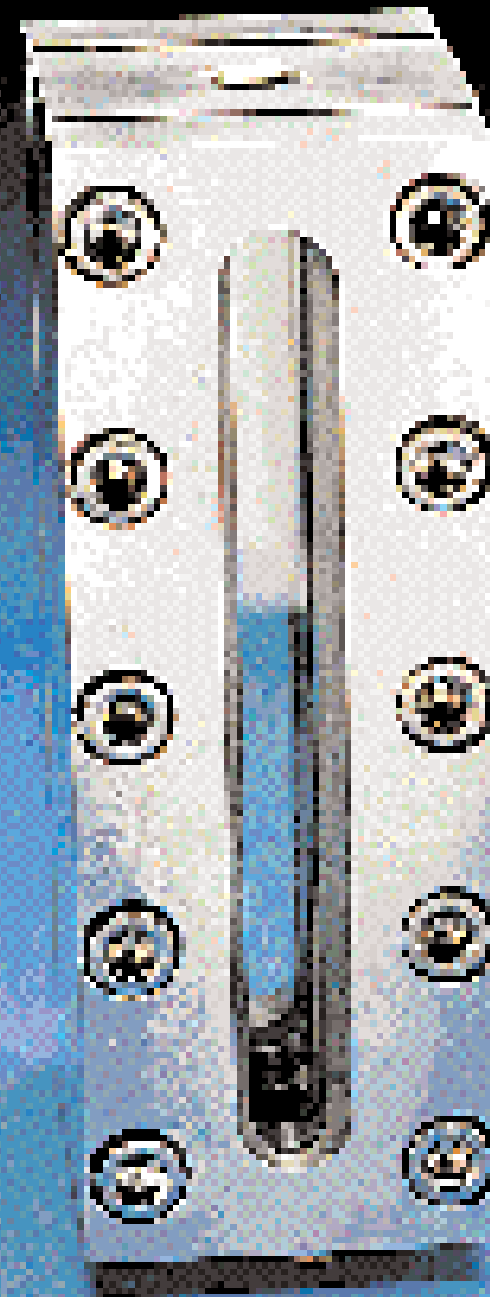
**PresSure Products** also manufactures a complete line of wall-mounted safety sight glasses, in-line sight glasses, weld pads, spray rings, wiper assemblies, lights and spare parts. For more information on our product line, or to receive a free PresSure Products catalog, call us toll-free at (800) 624-9043, or (304) 744-7871. Information pertaining to pressure or temperature requirements, as well as non-standard materials of construction, is available upon request from PresSure Products. All PresSure Products standard units are Factory Mutual approved.

## PresSure Products Company, Inc.

4540 W. Washington Street  
Charleston, WV 25313  
Toll-free (800) 624-9043 or (304) 744-7871  
Fax (304) 744-6705

Visit us on the World Wide Web at  
[www.pressureproducts.com](http://www.pressureproducts.com)

**PresSure Products Company, Inc.**



**Liquid Level Gauges**

# A Tradition of Dependability

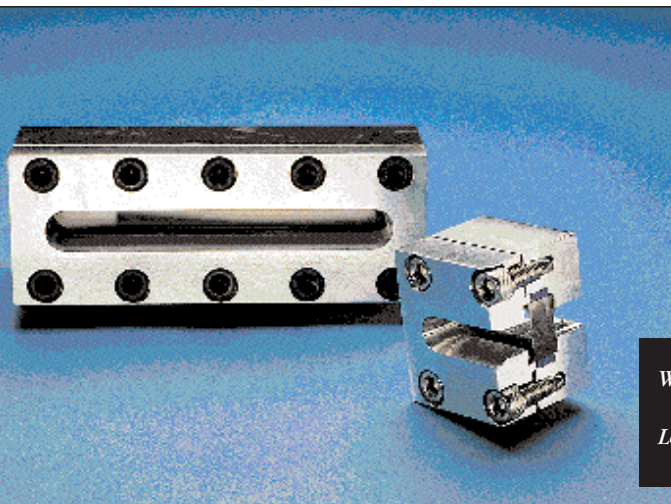
*PresSure Products Company has been known as an industry leader in the manufacture of safety sight glasses since 1959. For four decades, customers worldwide have come to rely on the safety, quality and reliability that have become PresSure Products' trademark.*

**PresSure Products'** complete new line of liquid level gauges, like its sight glasses, is designed to meet your temperature or pressure requirements. Our level gauges also offer an unmatched measure of safety in the handling of flammable, corrosive or otherwise hazardous materials, and a rugged assembly that resists wear and deterioration.

## The PresSure Products Advantage

Simply put, you can't afford to take chances when operational safety is at issue. With other liquid level gauge designs, the gauge glass is simply sandwiched between the cap and body with gaskets, which applies undue stress to the glass.

To avoid this situation, which may result in glass failure, PresSure Products provides O-rings or packing *around* the periphery of our level gauge glass. Thus, as you tighten the cap, no undue strain is imposed on the glass. We also use cushion gaskets to prevent metal-to-glass contact. If leakage should occur, the gauge cap can be tightened in order to seal the unit.



*Weld Pad Liquid  
Level Gauge*

## Our Line of Liquid Level Gauges

**See Thru:** The See-Thru Liquid Level Gauge is used to view the level, color or clarity of the liquid in a vessel or tank. The gauge glass is mounted on the front and back of the liquid chamber to permit light to pass through the gauge.

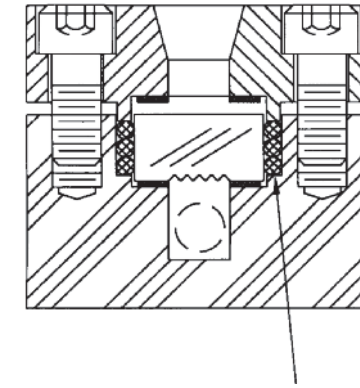
The gauges are used as a single unit or can be stacked in multiple sections to view a desired height of liquid in a vessel or tank. Standard units are furnished with 1/2" or 3/4" NPT female-end connections. The See-Thru can also be furnished with other connections (including socket weld, flanged or as specified) as well as with various types of valves upon request.

**Reflex:** The Reflex Liquid Level Gauge is used to view the level of the liquid in a vessel or tank. The grooved reflex gauge glass is mounted only on the front of the liquid chamber. The gauges are used as a single unit or can be stacked in multiple sections to view a desired height of liquid in a vessel or tank. Standard units are furnished with 1/2" or 3/4" NPT female-end connections. The Reflex can also be furnished with other connections (including socket weld, flanged or as specified) as well as with various types of valves upon request.

**Weld Pad:** This unit is designed to be welded directly onto a tank or other liquid-containing vessel. Standard units are furnished with a flat mounting surface. The unit can be machined upon request with a cylindrical radius to match the contour of the vessel and is available in single or multiple section types.

## The PresSure Products Level Gauge

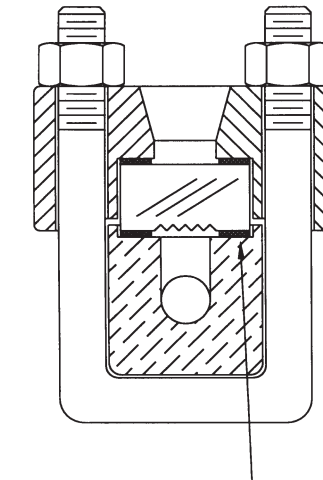
PresSure Products level gauges use O-rings or packing to seal around the periphery of the glass. Cushion gaskets are used to avoid glass-to-metal contact. The advantage? There is no stress



applied to the glass when you tighten the cap—instead, all stress is concentrated on the O-rings or packing, which in turn seal around the glass. In cases where the gauge is leaking, you can merely tighten the cap to seal the unit.

*Multiple O-rings or packing are used to prevent leakage. The cap can be tightened to improve the seal if necessary.*

## The Competition's Level Gauge



Most of our competitors simply sandwich the glass between the cap and the unit body with gaskets. The disadvantage here is that undue and dangerous stress is applied to the glass. Under these circumstances, a leak would mean having to completely disassemble and replace the gaskets.

*Gasket failure here will result in total loss of pressure.*