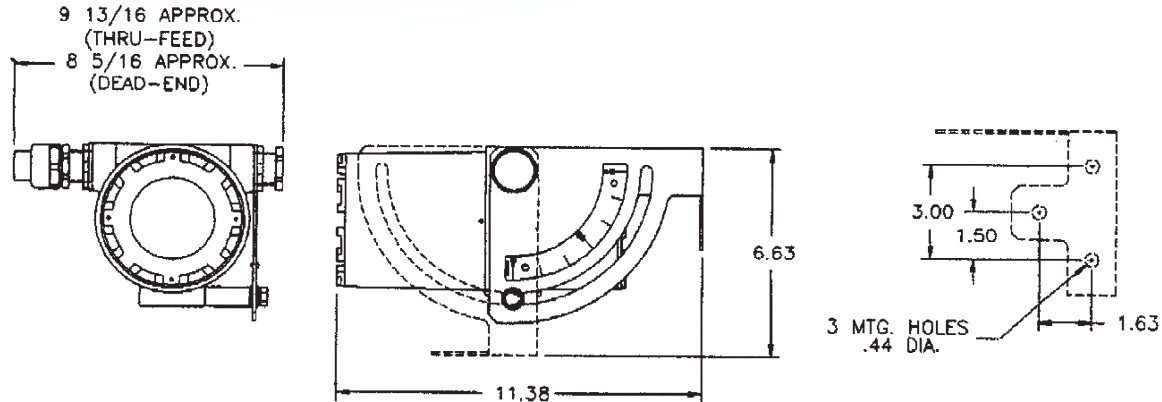


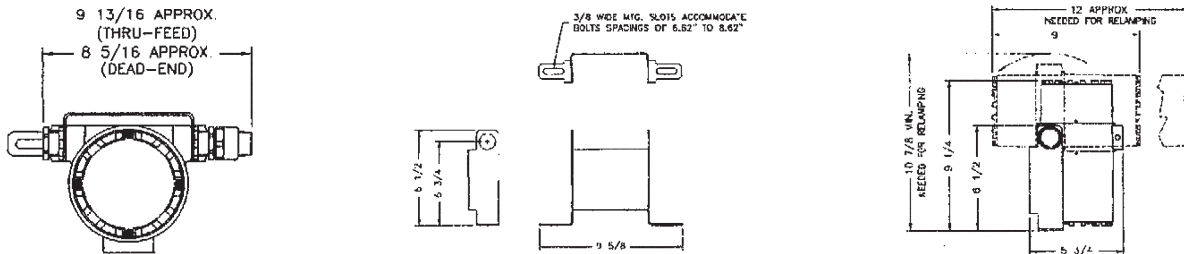
# Explosion-Proof Lights – PPC-EVTL Light

## Engineering Information:

### Dimensions: Bracket Mount



### Dimensions: Leg Mount



Designation	Explosion Proof	Lamp Type	Lamp Wattage	Lamp Voltage	Mounting Style
PPC-EVTL1B50	Yes	Halogen	50	120	Universal bracket
PPC-EVTL1L50	Yes	Halogen	50	120	Sight glass leg

- Connections are made through a 1/2" NPT hub.
- Certifications and compliances: Class I, Division 1 and 2, Groups B, C, and D; Class II, Groups E, F, and G; Class III; Class I, Zone 1 and 2, Groups IIB and hydrogen; wet locations; NEMA 4X; UL 844, 1571; and CSA C22.2 No. 137.
- Temperature performance data (40° C maximum ambient): T3B; supply wire is 85 C.